

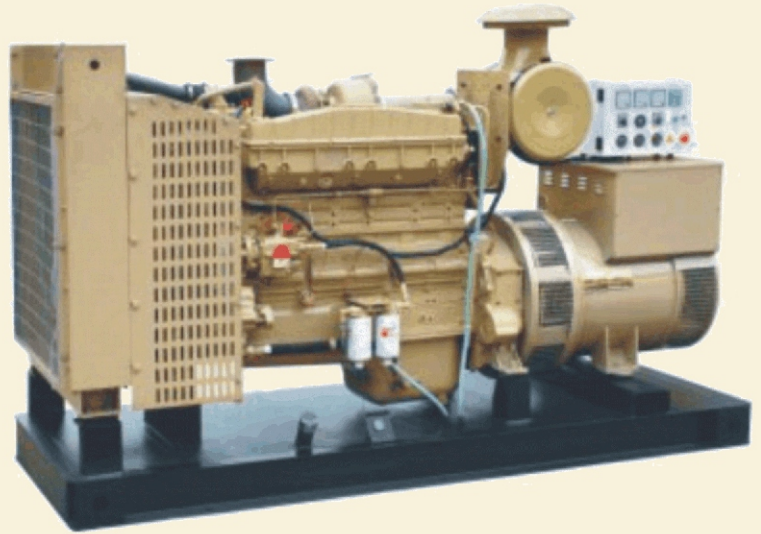


CUMMINS SERIES DIESEL GENERATING SET

Generally the generators adopt (TFW or STC or Leroy Somer or Stamford or Marathon) our company's TFW series brushless three phase synchronous generator (the characteristic and technical data see the section "Generators in industry"). If the customer requires that also could adopt other generators.

The generator set is made up of diesel engine, synchronous generator, accessories, and the control system is made up of volt meter, frequency meter, a.c. Ampere meter, d.c. ampere meter, water temperature meter, oil temperature meter, oil pressure meter, fuel meter, controller for protection, transfer switch system and other accessories. Different starting type including manual & electric & auto. Transfer can be selected by our customer.

The generator sets also can adopt fuel box at bottom, controller with four protections (high water temperature, high oil temperature, low oil pressure, over speed); also can design for silent, fully automatic transfer and automatic parallel system.



Technical Data

Model	Rated Power (KW/KVA)	Rated Current (A)	Fuel Consumption (L/H)	Engine Type	Dimension (mm) L×W×H
Y-C40	40/50	72	12	4BTA3.9-G2	1850×850×1100
Y-C50	50/62.5	90	14	6BT5.9-G2	2150×850×1100
Y-C58	58/72.5	105	17	6BT5.9-G2	2150×850×1100
Y-C70	70/87.5	126	19	6BT5.9-G2	2280×850×1100
Y-C75	75/93.75	135	21	6BT5.9-G2	2280×850×1100
Y-C80	80/100	144	23	6BT5.9-G2	2280×850×1100
Y-C90	90/112.5	162	26	6BTA5.9-G2	2400×830×1120
Y-C104	104/130	188	30	6BTAA5.9-G2	2400×830×1120
Y-C120	120/150	216	36	6CTA8.3-G2	2650×950×1300
Y-C140	140/175	253	40	6CTA8.3-G2	2650×950×1300
Y-C150	150/187.5	271	42	6CTA8.3-G2	2650×950×1300
Y-C160	160/200	289	44	NT855-GA	3000×980×1530
Y-C180	180/225	325	50	NT855-GA	3000×980×1530
Y-C200	200/250	361	55	NT855-GA	3000×980×1530
Y-C217	217/271	391	58	NT855-GA	3000×980×1530
Y-C228	228/285	411	65	NT855-G1A	3100×980×1530
Y-C250	250/312.5	451	70	NT855-G1A	3150×980×1530
Y-C260	260/325	469	72	NT855-G2A	3150×980×1530
Y-C280	280/350	505	76	NT855-G2A	3150×980×1530
Y-C280	280/350	505	78	NT855-G4	3150×980×1530
Y-C300	300/375	541	83	NTAA855-G7	3220×1380×1550
Y-C300	300/375	541	83	KTA19-G2	3300×1250×1800
Y-C320	320/400	577	86	NTAA855-G7A	3300×1380×1550
Y-C360	360/450	649	97	KTA19-G3	3550×1250×1800
Y-C400	400/500	722	107	KTA19-G4	3750×1250×1800
Y-C450	450/562.5	812	117	KTAA19-G5	3750×1250×1800
Y-C460	460/575	830	127	KTAA19-G6	3750×1920×2300
Y-C500	500/625	902	130	KTAA19-G7	3750×1920×2300
Y-C500	500/625	902	140	KTA38-G	4600×1630×2320
Y-C560	560/700	1010	156	KTA38-G2	4650×1630×2320
Y-C600	600/750	1082	167	KTA38-G2	4650×1630×2320
Y-C640	640/800	1155	170	KTA38-G2A	4650×1630×2320
Y-C728	728/910	1313	194	KTA38-G2A	4650×1630×2320
Y-C750	750/937.5	1353	200	KTA38-G2A	4650×1630×2320
Y-C800	800/1000	1443	209	KTA38-G5	4850×1830×2400
Y-C825	825/1031	1488	215	KTA38-G5	4850×1830×2400
Y-C900	900/1125	1624	230	KTAA38-G9	5000×1830×2400