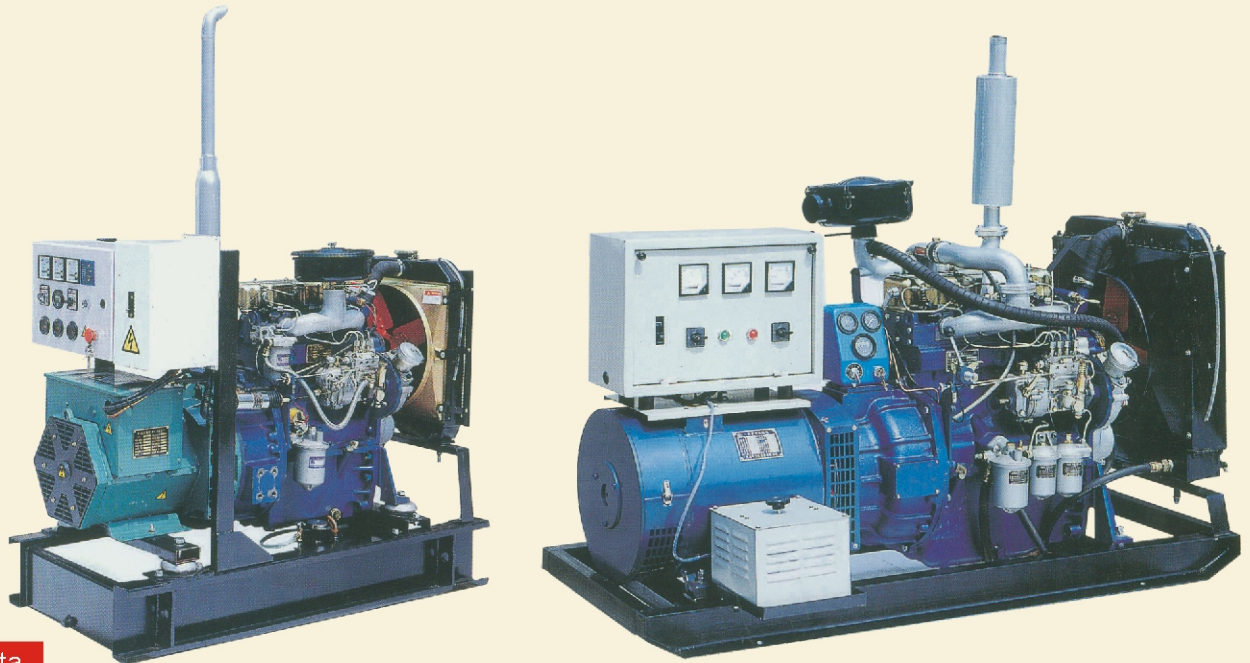




# NEW HOLLAND SERIES DIESEL GENERATING SET



## Technical Data

Genset Model			Y-NE12	Y-NE15	Y-NE24	Y-NE30
Standby Rating	KW		13.2	16.5	26.5	33
Prime Rating	KW		12	15	24	30
Diesel Engine	Model		295AD	395AD	495AD	495AZD
	12h Rated Power	PS	13.8	20.6	28	34.3
		KW	18.8	28	38	47
	Fuel consumption	G/KW.H	258.4	254.2	251.6	251.6
		Closed water cooled/Electric starting				
Alternator			TFW or Leroy somer or Stamford or Marathon			
	Rated Output	KW	12	15	24	30
	Rated Current	A	21.6	27	43.3	54.1
	Rated Voltage	V	400/230			
	Frequency	HZ	50/60			
	Power Factor	COSφ	0.8Lagging			
	Phase Connection		3-phase,4-wire,type connection			
	Excitation		Harmonic Excitation or Brushless			
	Voltage Regulation		Automatic/Manual			
Net Weight	Kg	600	700	800	900	
Overall Dimensions	mm	1400*650*1100	1600*650*1200	1780*700*1420	1800*720*1240	